

## Section 1. PRODUCT DESCRIPTION

### UNIVERSAL PLUG PLASTIC SLEEVE – SFX

Universal plug plastic sleeve SFX is made of polyamide. It is used for fixing of members on most of building substrates. The sleeve has ribs and stabilising fins which prevent rotation of sleeve during installation and provide initial fixation in the substrate. Unique shape of the sleeve allows for installation in both solid materials (by expansion of the sleeve) and materials with voids (by shape fixation – “knot” formation).

Types of substrates on which plastic sleeve SFX can be installed:

- Concrete
- Solid clay brick and sand-lime brick
- Hollow clay brick and sand-lime brick
- Autoclaved aerated concrete
- Cement board
- Plasterboard



Mniejsza średnica początkowa koszulki  
- ułatwia montaż w otworze.



„Wypusty” stabilizujące  
- innowacyjne rozwiązanie stabilizujące koszulkę.



Unikalny kształt koszulki  
- gwarantuje zawiązanie „supła” co powoduje zwiększenie powierzchni docisku w pustych przestrzeniach.



Powiększona średnica kołnierza  
- zapewnia pewne oparcie koszulki o podłoże.

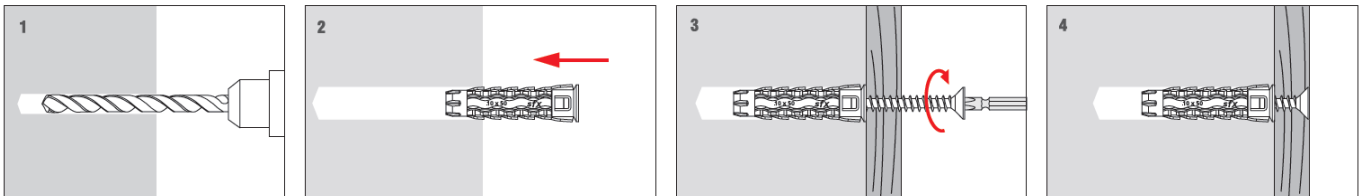


„Płatwy” stabilizujące  
- element przeciw obrotowy zapobiega obrotowi koszulki w podłożu podczas wkręcenia.



## Section 2. METHOD OF INSTALLATION

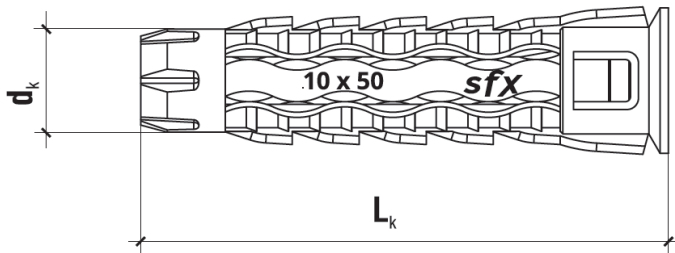
1. Original sleeves delivered by the manufacturer can be used only
2. Before fastening identify the substrate on which sleeve will be installed
3. Select adequate length of the sleeve so that expansion zone is in the construction material of the wall
4. Use proper method of drilling according to a substrate type (holes in brickwork substrate made of hollow or autoclaved aerated concrete blocks should be drilled using a drill without impact)
5. Diameter of drilled holes should match diameter of the sleeves used
6. Drilled holes in substrates of solid materials should be deeper by min. 10mm compared to the sleeve anchorage depth
7. Clean the holes in solid materials of drillings with a back and forth motion of the drill at a reduced speed
8. Then insert the sleeve into a drilled hole, and drive the matched screw through the element being fixed until it completely penetrates the sleeve (pre-fastening installation)
9. The sleeve is not a structural element



**PRODUCT DATA SHEET – SFX**

**Section 3. TECHNICAL DATA**

SELECTION TABLE					
Product code	Sleeve diameter and length	Recommended screw diameter	Min. anchorage depth	Min. depth of drilled hole	Number of pieces in a box
	$d_k \times L_k$ [mm]	$d_w$ [mm]	$h_{eff}$ [mm]	$h_o$ [mm]	[pcs]
SFX-05025	5x25	3,5	25	35	400
SFX-06030	6x30	4,0	30	40	200
SFX-08040	8x40	5,0	40	50	200
SFX-10050	10x50	6,0	50	60	100
SFX-10060	10x60	6,0	60	70	100



**Section 4. REMARKS**

1. All previous versions of this Product Data Sheet shall cease to be valid
2. Data given in this Product Data Sheet is in accordance with current knowledge and published in good faith. KLIMAS Sp. z o.o. is not responsible for correctness and quality of the fixing if recommendations regarding method of use and installation are not followed.